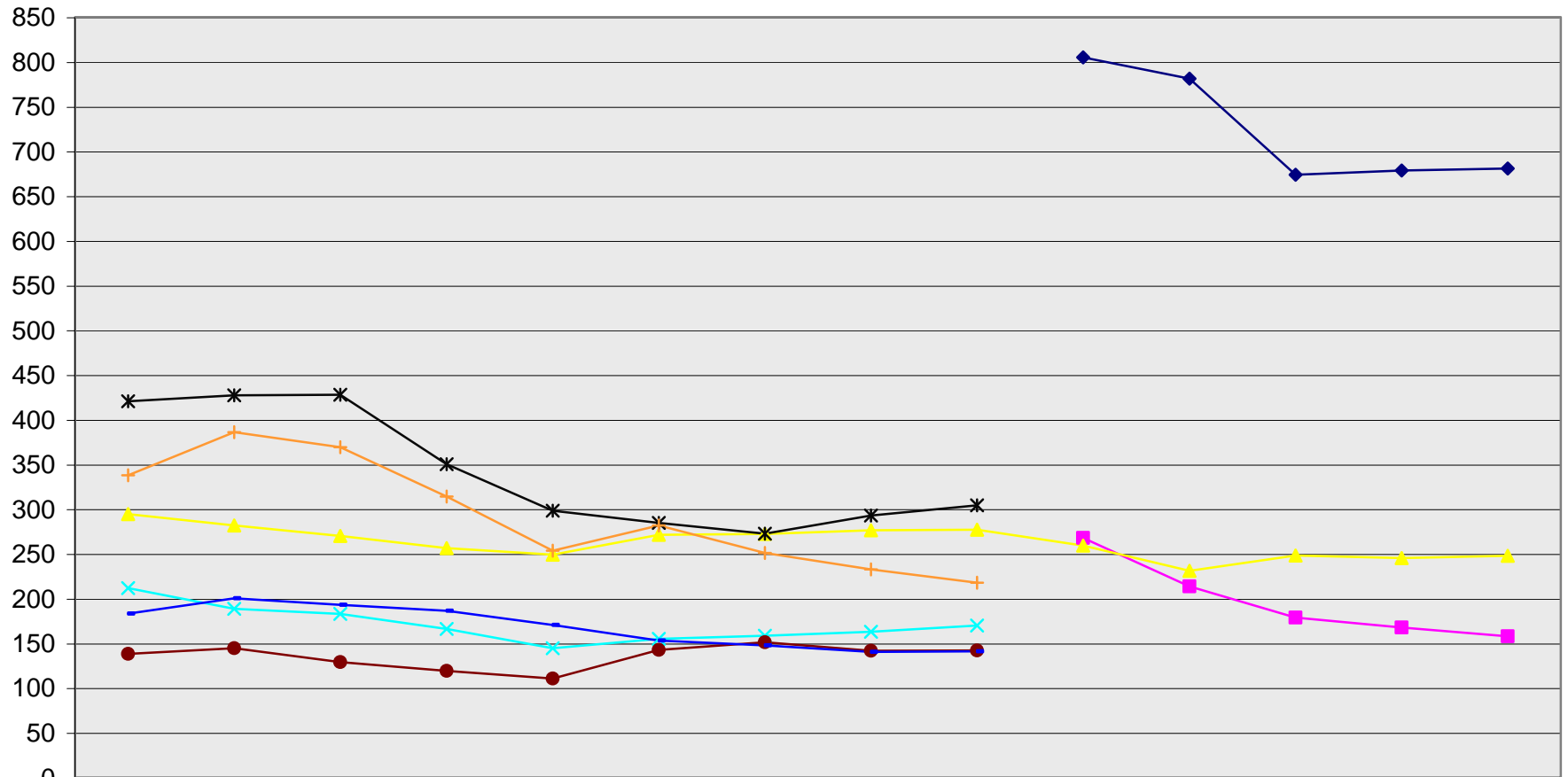


Annualized Undergraduate Equivalent Enrolments Taught (EET) - Education

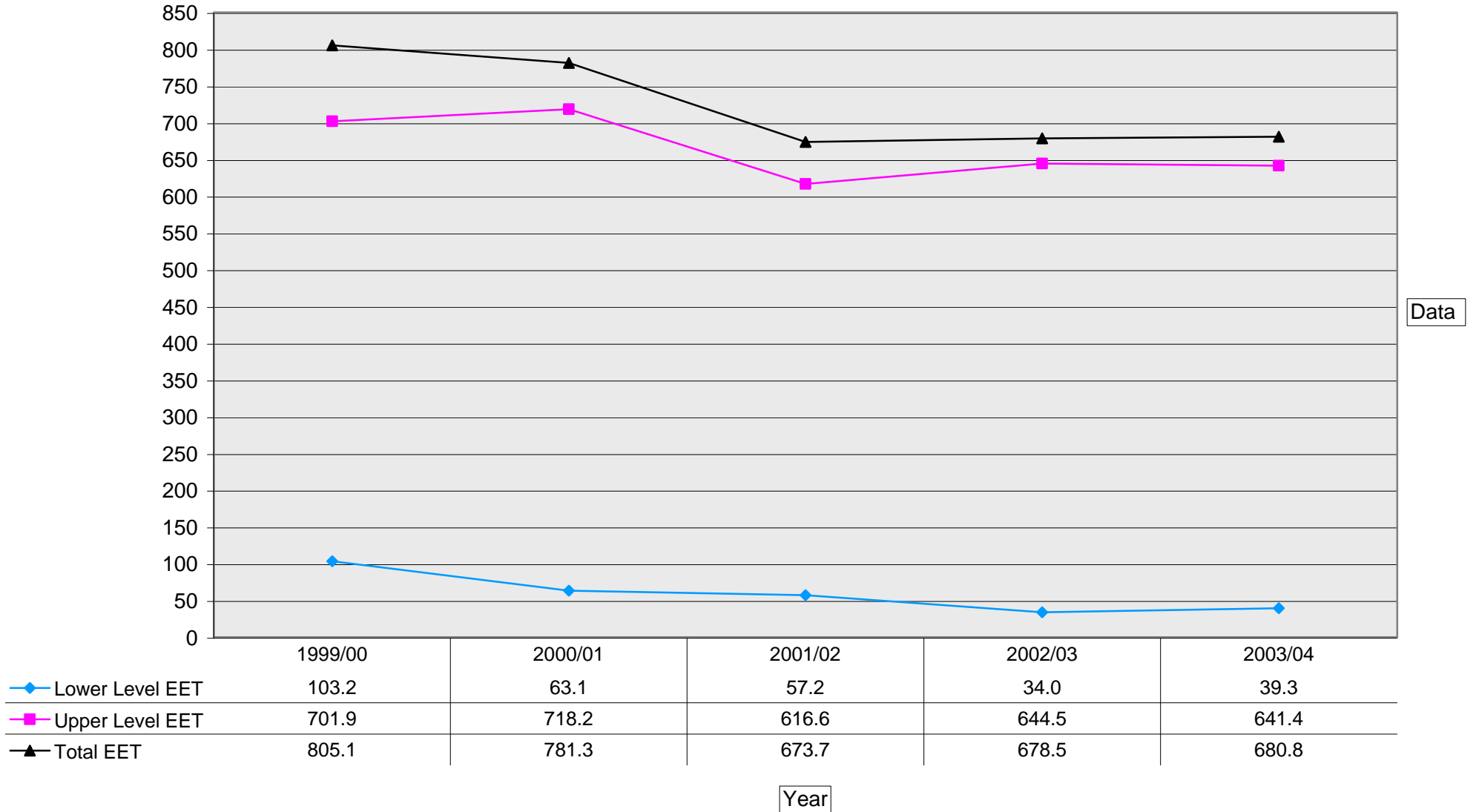


	1990/91	1991/92	1992/93	1993/94	1994/95	1995/96	1996/97	1997/98	1998/99	1999/00	2000/01	2001/02	2002/03	2003/04
◆ Curriculum & Instruction										805.1	781.3	673.7	678.5	680.8
■ Educ. Psyc. & Lead. Std										267.7	213.6	178.9	167.8	158.0
▲ Physical Education	294.4	281.8	270.2	256.3	249.2	271.4	272.4	276.5	276.9	259.3	231.0	248.3	245.4	247.9
✕ Arts in Educ.	211.6	188.4	182.8	166.2	144.6	154.9	158.3	163.0	169.8					
* Comm. & Social Fnd	420.6	427.3	427.7	350.3	298.3	284.7	272.6	292.9	304.2					
● Professional Studies	138.1	144.4	129.0	119.2	110.7	142.7	151.2	141.6	142.1					
+ Psych. Fnds in Educ.	337.8	386.0	369.1	314.1	253.6	281.8	251.2	232.7	217.8					
— Social & Nat. Sci.	183.2	200.3	193.1	186.2	170.4	153.1	147.6	140.3	140.9					

Source: ClassPops (ARAI Table 1)
University of Victoria

Institutional Planning & Analysis
March 4, 2004

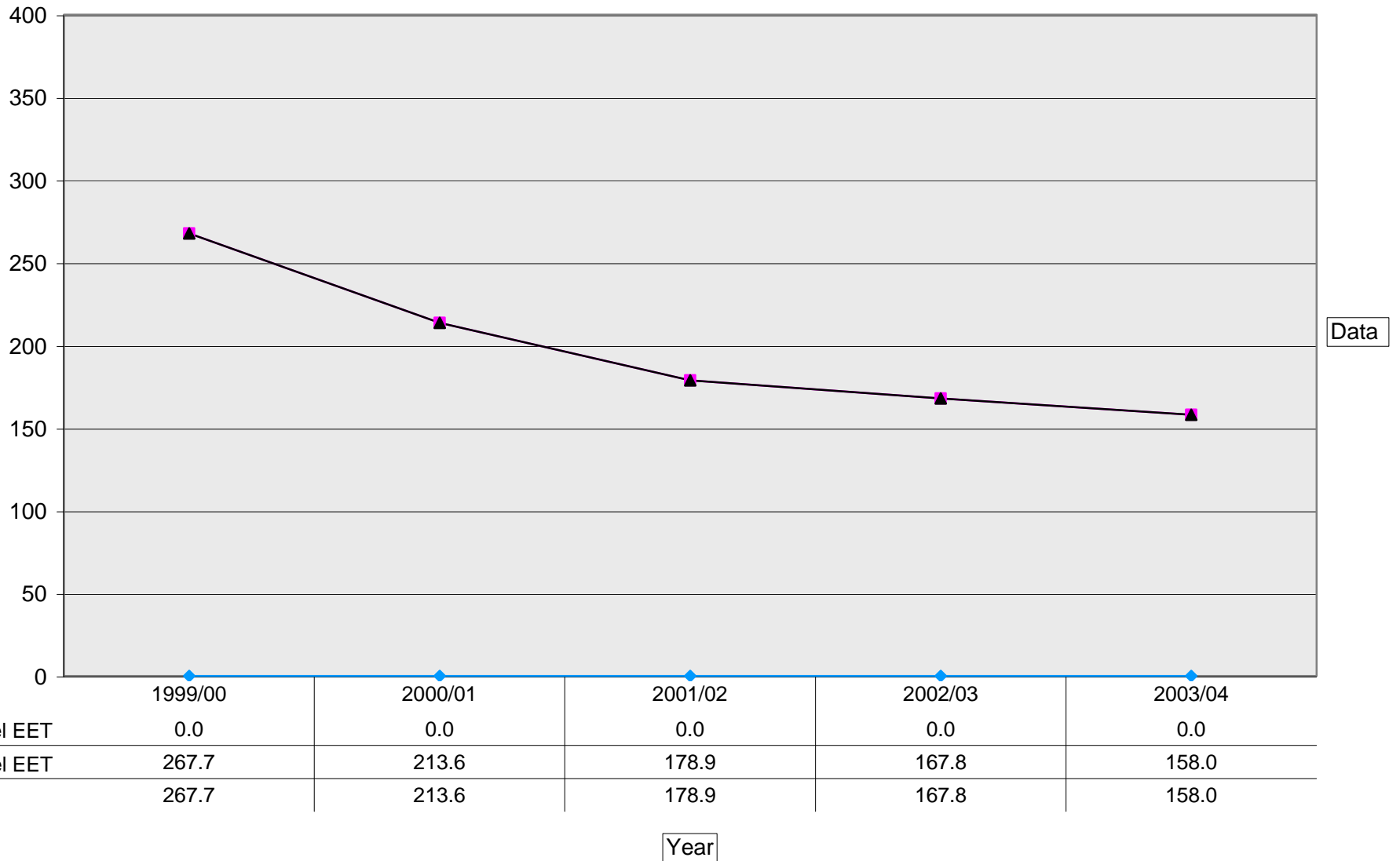
Annualized Equivalent Enrolments Taught (EET)



Source: ClassPops (ARAI - Table 1)
University of Victoria

Institutional Planning & Analysis
March 4, 2004

Annualized Equivalent Enrolments Taught (EET)



Source: ClassPops (ARAI - Table 1)
University of Victoria

Institutional Planning & Analysis
March 4, 2004

Annualized Equivalent Enrolments Taught (EET)

